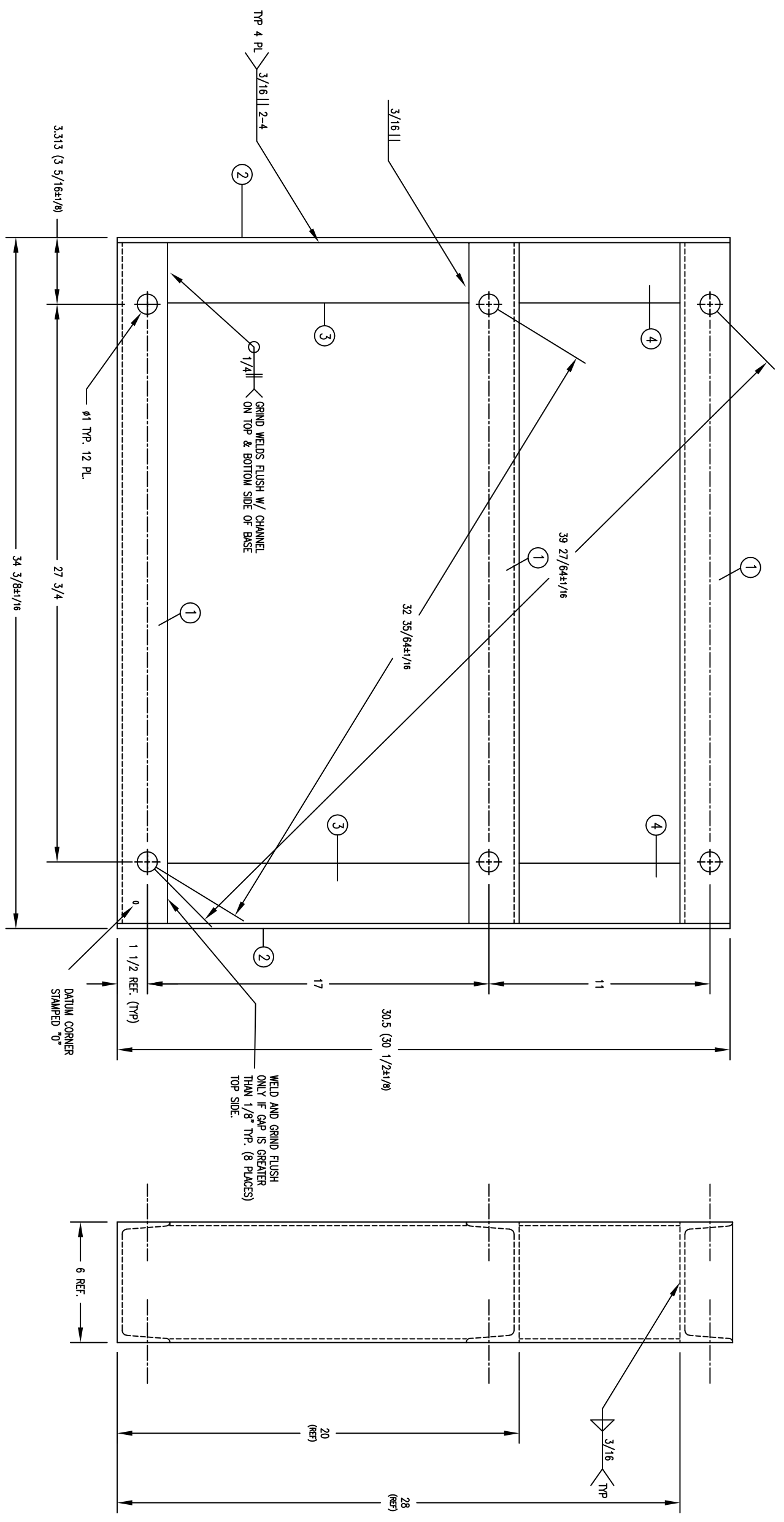


REV	REVISIONS	APP
PR	REL FOR PROD: 9945-117-001 DIM F-14: WAS 36 5/8±1/8, NOW 30 1/2±1/8 ECN 19149 8/22/02	AMM
A	UPDATED VIEWS TO SHOW WELD REQ'S, REVISED NOTES AND MOVED PARTS LIST UNDER TOP VIEWS. ECN 00032 9/23/08	KJL
B	RWMD DEC DIMS 39.422 @ D-7, 32.547 @ E-8, 27.75 @ J-8 & 34.375 @ K-8. CHGD PRIMER FROM GRAY TO BLACK IN TITLE BLOCK. ECN 001284 1/10/12	TWH
C	CORRECT LENGTHS IN PARTS LIST: CHANNEL WAS 30.88, MCG12# WAS MCG13.8#, SIDE PLATE WAS 30.344. ECN 002584 06/01/15	SC

- NOTES:
1. METHOD OF ASSY - ARC WELD
 2. APPLY (1) COAT BLACK PRIMER
 3. PART TO BE FLAT WITHIN 1/8".
 4. ZERO PLANES ARE LOCATED OFF FARTHEST PROTRUDING EDGE.
 5. FILLER PLATES TO BE FLUSH TO 1/16" RECESSED FROM TOP SURFACE.

QTY	PART NO.	DESCRIPTION
4		SHORT FILLER TOP/BTM LH/RH
4		LONG FILLER TOP/BTM LH/RH
2		SIDE FILLER PLATE L/H R/H
3		CHANNEL FF/MID/RR
1		MCG X 12#/FT. STEEL CHANNEL @ 33 7/8"

BASE-ASSY-1 PLACE, 6"



9945-117-001		BASE-ASSY-1 PLACE	
PART NO.		DESCRIPTION	
DEXTER LAUNDRY, INC. FAIRFIELD, IOWA			
STANDARD RAW STOCK COMMERCIAL TOLERANCES APPLY UNLESS EXCEPTED	FRACTIONS ±1/32 DECIMALS ±.005 ANGULAR ±2°	NAME BASE ASSY-1 PLACE, 6"	USED ON 40# 2005 WASHER
TOLERANCE UNLESS OTHERWISE SPECIFIED	MATERIAL	FINISH 1 COAT BLACK PRIMER	REFERENCE WAS XLF-2302
DRAWN RJMACK DATE 07/25/02 SCALE 1/4	CHECKED	APP.	DWG. NO. 9945-117